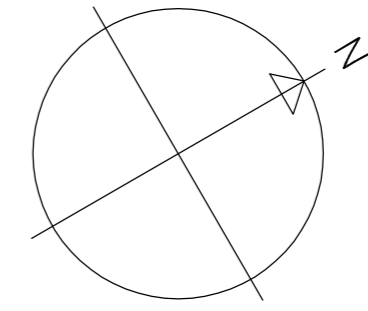






## ESTUDI GEBIOLÒGIC



5.400 Ud Boví



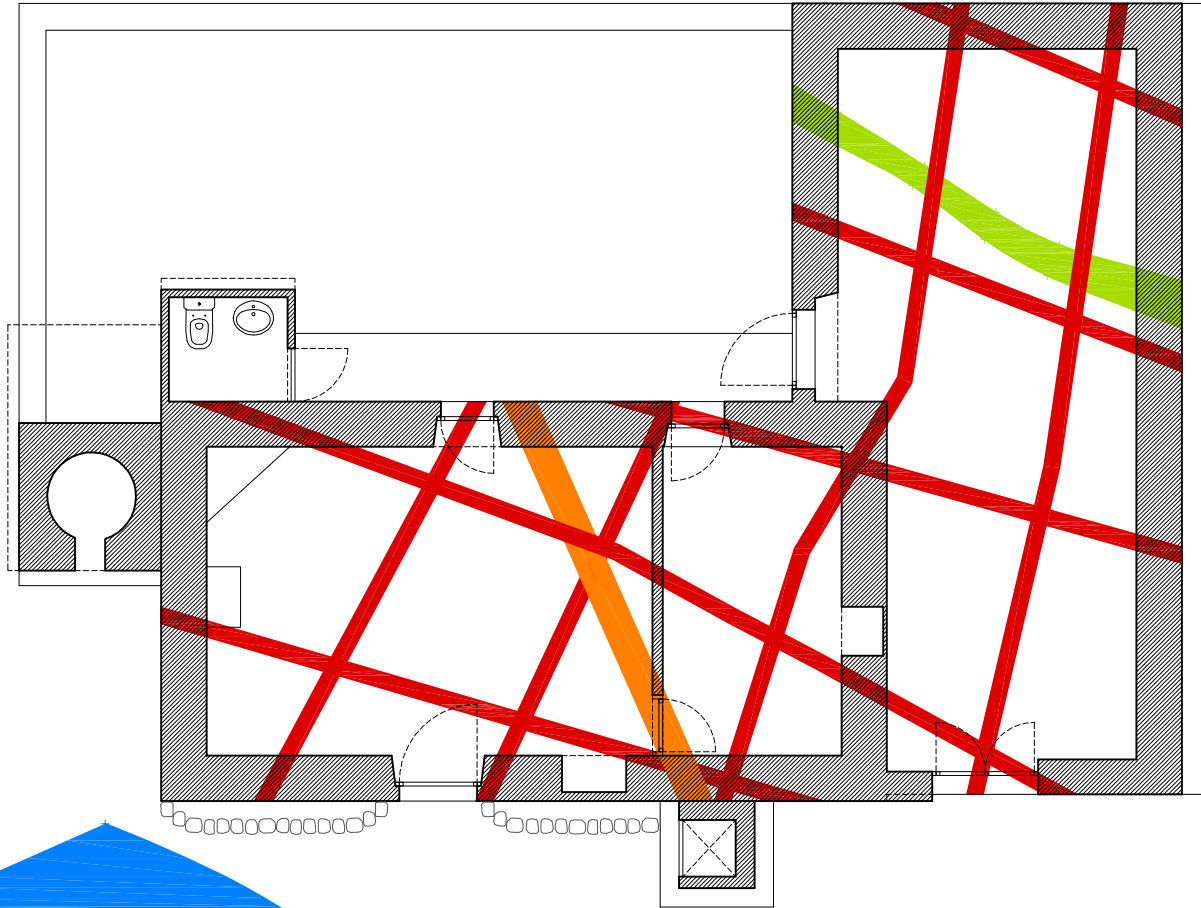
-  VENA D'AIGUA  
a 63 m
-  XIMENEIA TELÚRICA
-  LINEA HARTMAN
-  LINEA CURRY

CAMP ELCTROMAGNÈTIC (AT)  
1 mgau a 30 m  
0,3 mgau dins la casa

### RECOMANACIONS:

- Posar barrera vegetal (Aloe Vera) en la façana nord-oest per protegir-se del camp electromagnètic que provoca la línia de Alta Tensió que hi ha a uns 50 m.
- Derivar a una bona toma de terra tot l'acer de l'esctructura per minimitzar l'efecte del camp elèctric provocat per les línies de tensió del voltant.

# ESTUDI GEOBIOLÒGIC



5.700 Ud Bovi



VENA D'AIGUA



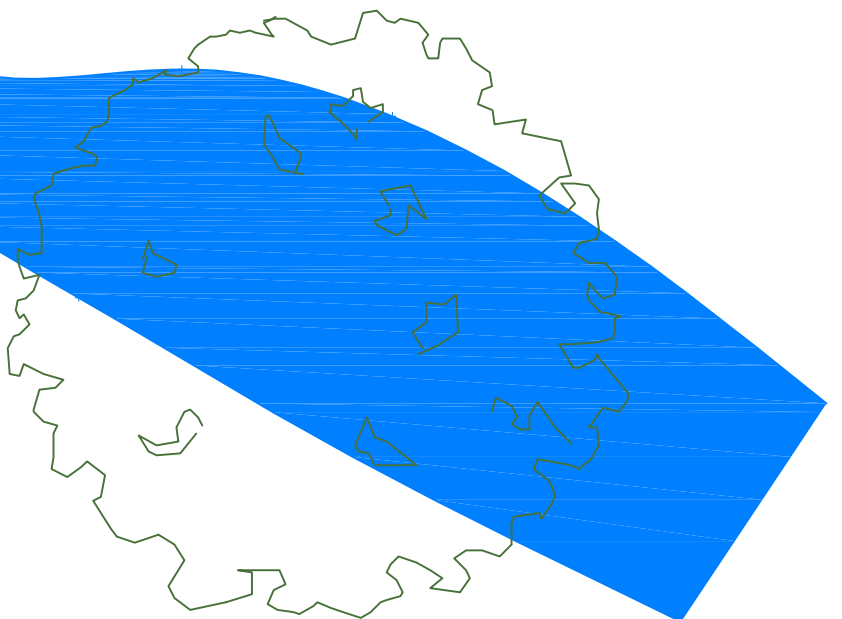
FALLA

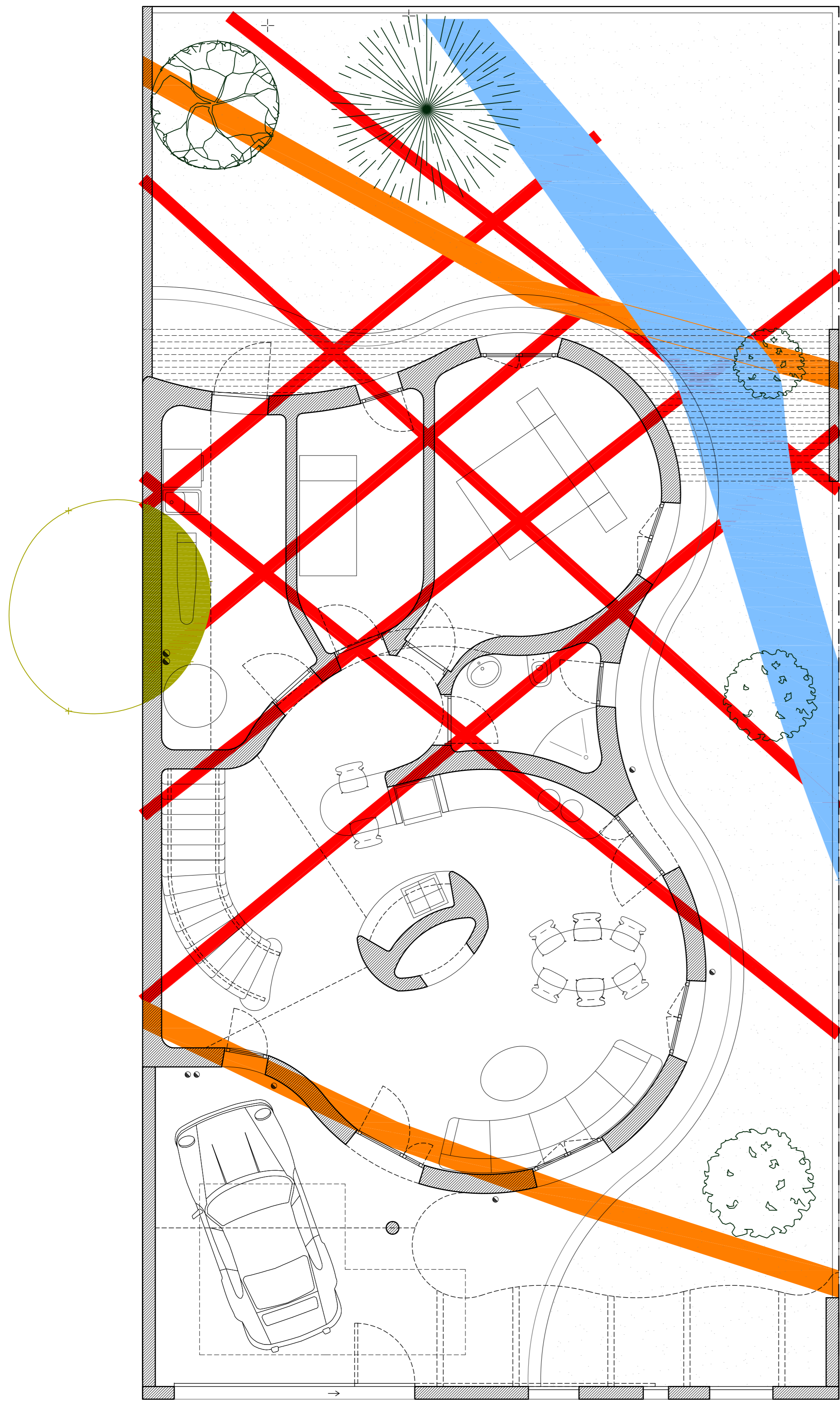


LINEA HARTMAN



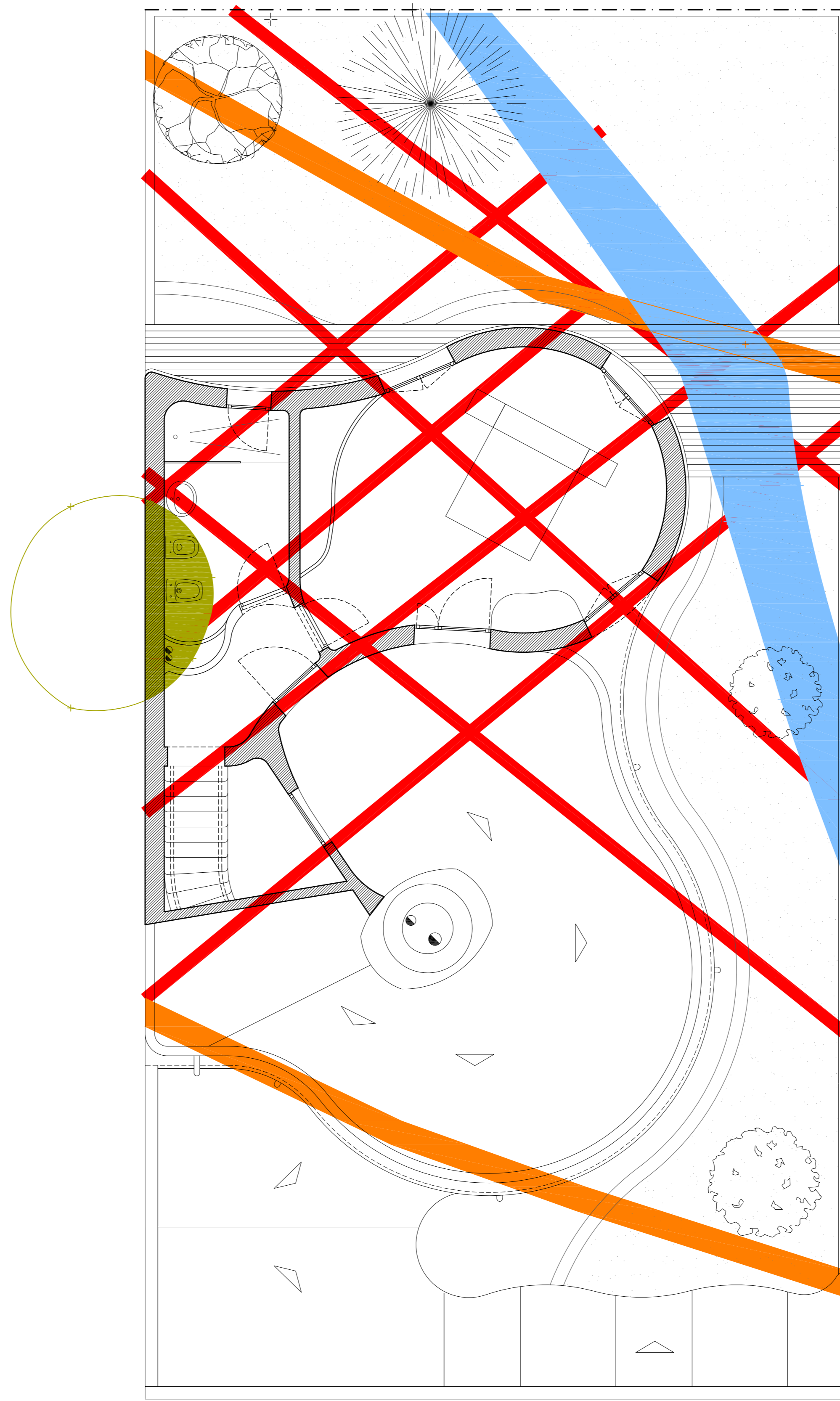
LINEA CURRY



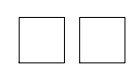
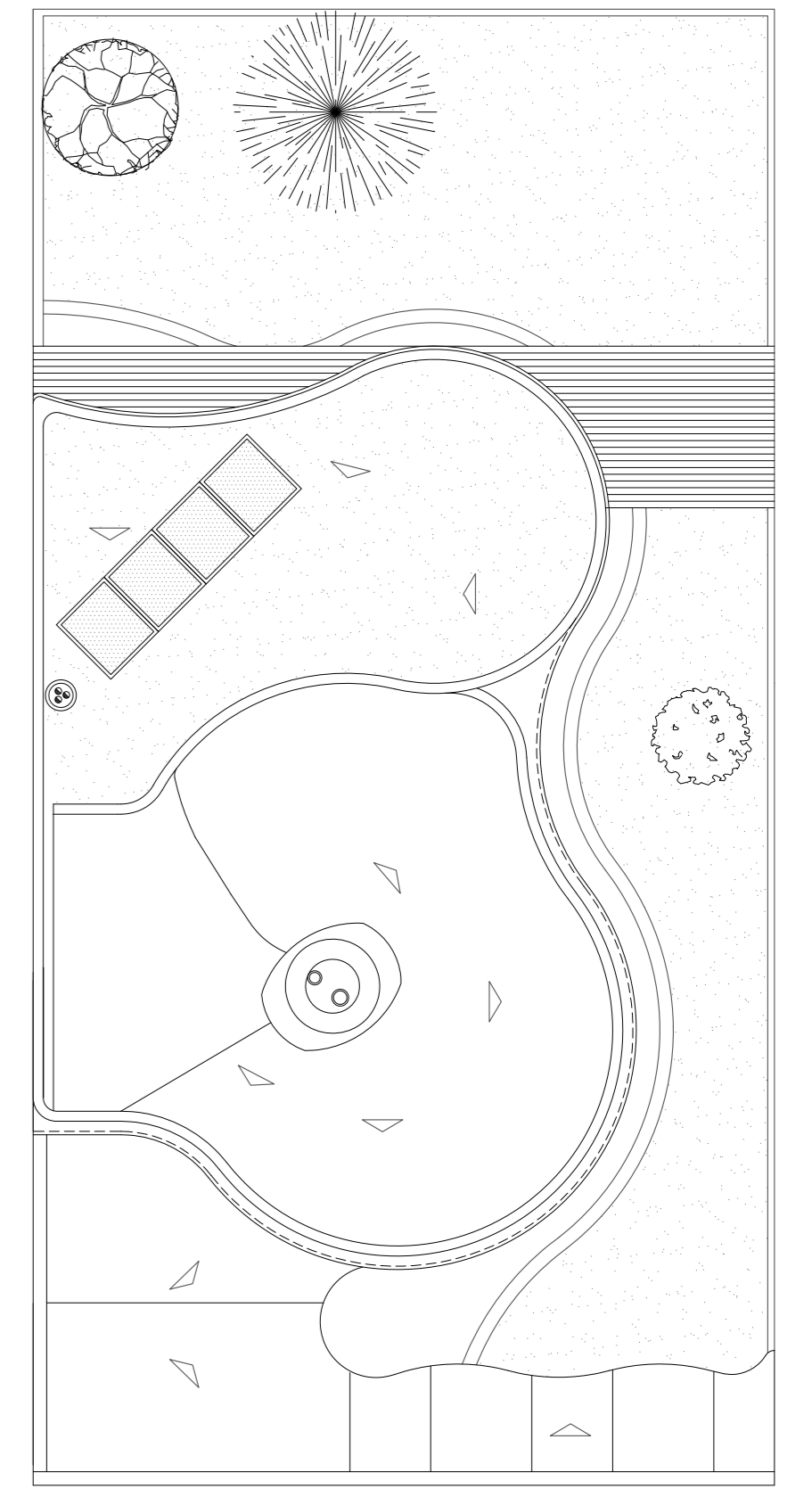
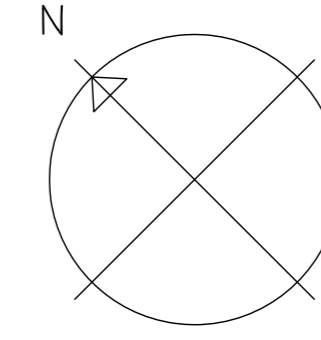


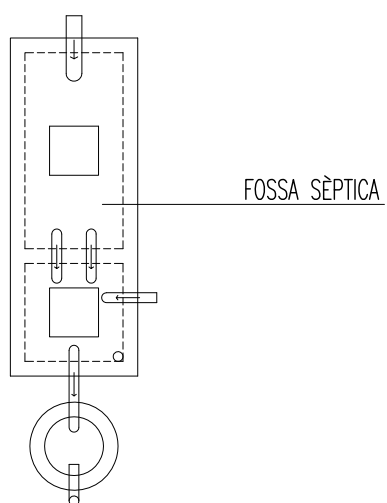
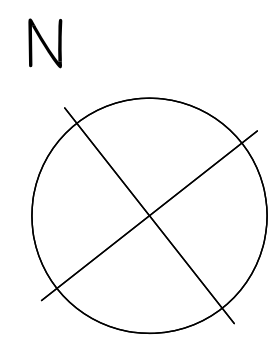
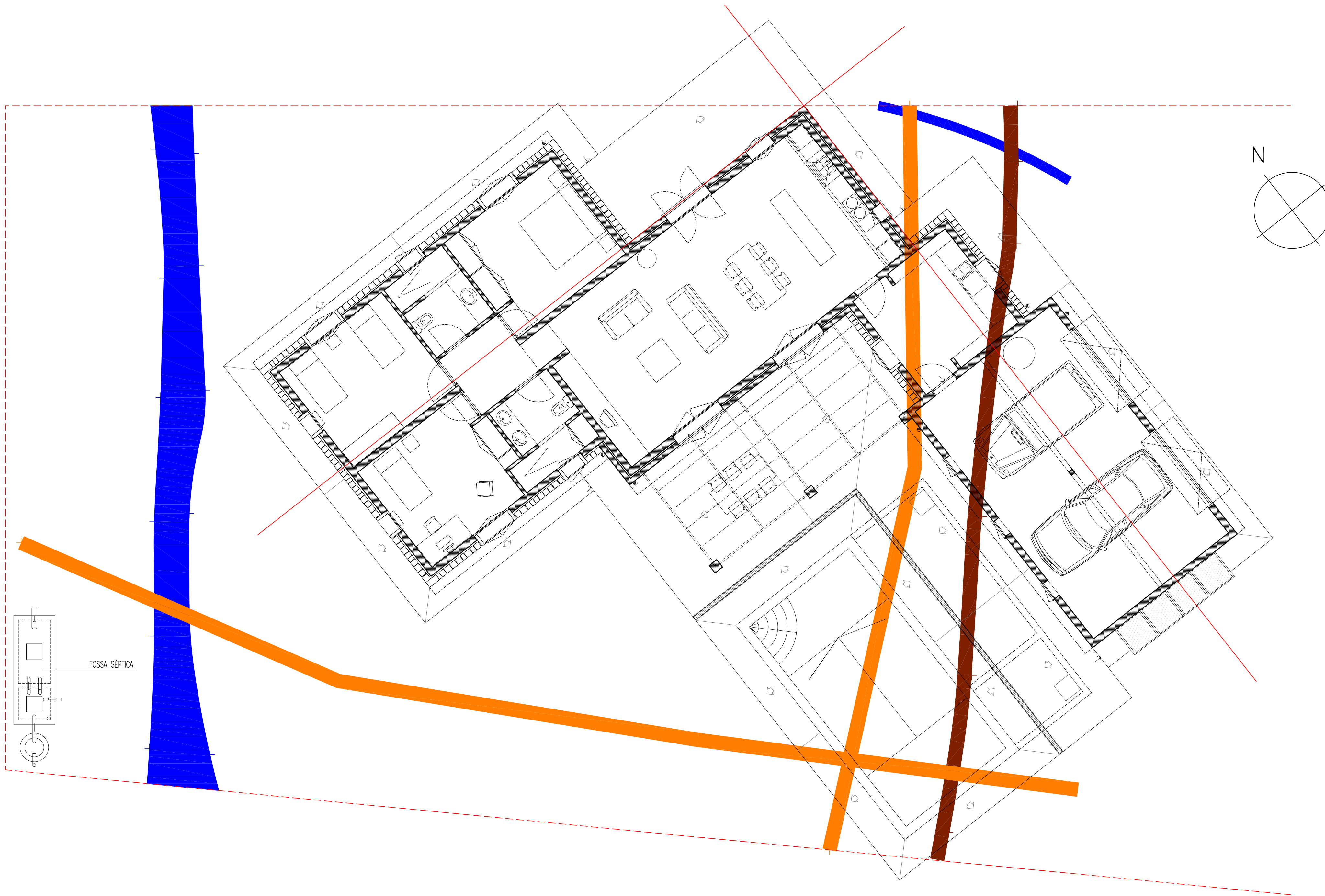
C/ MAJOR 53

PLANTA BAIXA



PLANTA PIS





RRR